

# Index numbers of construction and assembly production in April 2025<sup>1</sup>

22.05.2025

↓ 4.2%

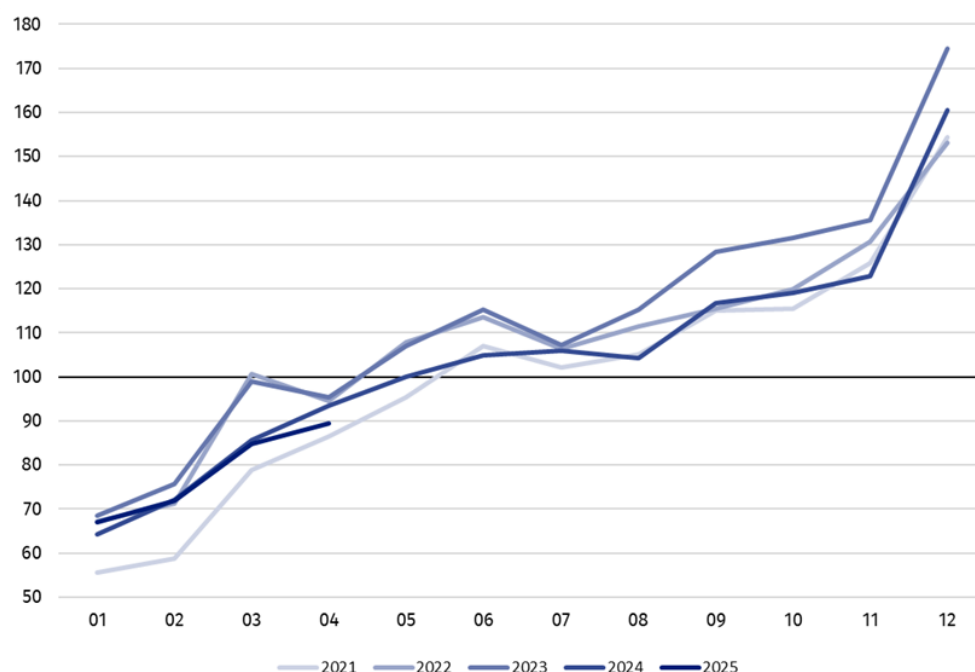
Decrease of construction and assembly production compared to April of 2024

According to preliminary data construction and assembly production (in constant prices) carried out domestically in April 2025 was lower by 4.2% than in the same period of 2024 (in April 2024 a decrease of 2.0%) and by 5.6% higher compared to March 2025.

In April 2025, after eliminating the seasonal factors, construction and assembly production reached the level by 2.9% lower than in the corresponding month of the previous year and lower by 0.8% in comparison to March 2025.

After seasonally adjusted, the decrease in construction and assembly production in April 2025 amounted of 0.8% an annual

**Chart 1. Index numbers of construction and assembly production (constant prices; average monthly base 2021=100)<sup>a</sup>**



<sup>a</sup> Preliminary data for April 2025.

The decrease in construction and assembly production in April 2025 (in constant prices), compared to the average monthly value of 2021, was 10.5%.

<sup>1</sup> Preliminary data; comprise enterprises employing over 9 persons, whose the main type of activity is included in the section F "Construction" in accordance with the Polish Classification of Activities (PKD 2007).

**Table 1. Index numbers of construction and assembly production (constant prices)**

Specification	04 2025		01–04 2025 <sup>a</sup>
	03 2025=100	04 2024=100	01–04 2024=100
<b>CONSTRUCTION</b>	<b>105.6</b>	<b>95.8</b>	<b>99.5</b>
Construction of buildings <sup>Δ</sup>	99.9	89.7	94.3
Civil engineering works <sup>Δ</sup>	120.3	91.7	97.1
Specialised construction activities	95.8	110.5	109.1

<sup>a</sup> Data including final information on production and prices in March and preliminary data in April 2025.

<sup>Δ</sup> Abbreviated form according to PKD 2007.

Construction and assembly production in April 2025 decreases were observed an annual in the entities dealing mainly with construction of buildings and for whose basic type of activity was civil engineering works of 10.3% and of 8.3% respectively, whereas increase was in the entities performing specialised construction activities of 10.5%.

In the period of January–April 2025, in relation to the same period of the previous year, in entities in whose basic type of activity was construction of buildings a decrease was recorded of 5.7% and in entities dealing mainly with civil engineering works of 2.9%, whereas an increase in the sales of construction and assembly production was noted in entities performing specialised construction activities of 9.1%.

In April 2025 compared to March 2025, an increase in the sales of construction and assembly production was noted in entities dealing mainly with civil engineering works of 20.3%, whereas decreased by 4.2% in entities performing specialised construction activities and in entities whose basic type of activity was construction of buildings of 0.1%.

Analyzing the value of construction and assembly production in terms of construction works (investment and restoration works) were observed:

- An annual increase for investment works by 1.9% and a decrease for restoration works by 16.0% (in 2024, an increase of 5.3% and a decrease of 13.7% respectively),
- Compared to March 2025, an increase for investment works by 7.3% and for restoration works by 1.9%.

In the period of January–April 2025, in relation to the same period of the previous year, an increase in the sales of construction and assembly production was noted for investment works by 3.2% and a decrease for restoration works by 7.8% (in 2024, decreases of 3.0% and 18.4% respectively).

In case of quoting Statistics Poland data, please provide information: “Source of data: Statistics Poland” and in case of publishing calculations made on data published by Statistics Poland, please include the following disclaimer: “Own study based on figures from Statistics Poland”.

In the period of January–April 2025 the construction and assembly production decreased by 0.5% an annual

In April 2025 was noted an increase in the construction and assembly production for investment works of 1.9% an annual

Prepared by:  
**Statistical Office in Lublin**

**Director Krzysztof Markowski, Ph.D.**  
Phone: (+48) 695 255 301

Issued by:

**Press Office**

Mobile: (+48) 695 255 032  
Phone: (+48 22) 608 38 04, (+48 22) 449 41 45,  
(+48 22) 608 30 09

e-mail: [obslugaprasowa@stat.gov.pl](mailto:obslugaprasowa@stat.gov.pl)



[stat.gov.pl/en/](https://stat.gov.pl/en/)



[@StatPoland](https://twitter.com/StatPoland)



[@GlownyUrzadStatystyczny](https://www.facebook.com/GlownyUrzadStatystyczny)



[gus\\_stat](https://www.instagram.com/gus_stat)



[glownyurzadstatystycznygus](https://www.youtube.com/glownyurzadstatystycznygus)



[glownyurzadstatystyczny](https://www.linkedin.com/company/glownyurzadstatystyczny)

#### **Related information**

[Statistical Bulletin](#)

[Socio-economic situation of the country](#)

#### **Data available in databases**

[Knowledge Database - Construction](#)

[Macroeconomic Data Bank](#)

[Macroeconomic indicators](#)

[Local Data Bank](#)

#### **Terms used in official statistics**

[Sale of construction and assembly production](#)

[Seasonally unadjusted index of sale of construction and assembly production in constant prices](#)

[Seasonally adjusted index of sale of construction and assembly production](#)

[Sale of construction works with an investment character](#)

[Sale of construction works with a restoration character and other works](#)