

19.12.2024

# Index numbers of construction and assembly production in November 2024<sup>1</sup>


**90.7**

Index number of construction and assembly production compared to November of 2023

According to preliminary data construction and assembly production (in constant prices) carried out domestically by construction enterprises employing more than 9 persons was in November 2024 by 9.3% lower than in the same period of 2023 (an increase of 3.8% the year before) and by 3.3% higher compared to October 2024 (an increase of 3.0% in the corresponding period of 2023).

**Table 1. Index numbers of construction and assembly production (constant prices)**

SPECIFICATION	11 2024		01-11 2024 <sup>2</sup>
	10 2024=100	11 2023=100	01-11 2023=100
<b>CONSTRUCTION</b>	<b>103.3</b>	<b>90.7</b>	<b>92.6</b>
Construction of buildings <sup>Δ</sup>	97.4	84.0	93.9
Civil engineering works <sup>Δ</sup>	112.2	96.8	92.9
Specialised construction activities	94.0	87.0	90.5

<sup>Δ</sup> Abbreviated form according to PKD 2007.

Construction and assembly production in November 2024, showed an annual decrease in all divisions of construction. For entities whose basic type of activity was construction of buildings of 16.0%, performing specialised construction activities it recorded of 13.0% and for entities dealing mainly with civil engineering works of 3.2%.

In the period of January-November 2024, in relation to the same period of the previous year, a decrease in the sales of construction and assembly production was noted in entities performing specialised construction activities of 9.5%. In entities dealing mainly with civil engineering works and in whose basic type of activity was construction of buildings decreases were recorded of 7.1% and of 6.1% respectively.

Compared to October 2024, an increase in the sales of construction and assembly production was noted in entities whose basic type of activity was civil engineering works of 12.2%,

<sup>1</sup> Preliminary data; comprise enterprises employing over 9 persons, whose the main type of activity is included in the section F "Construction" in accordance with the Polish Classification of Activities (PKD 2007).

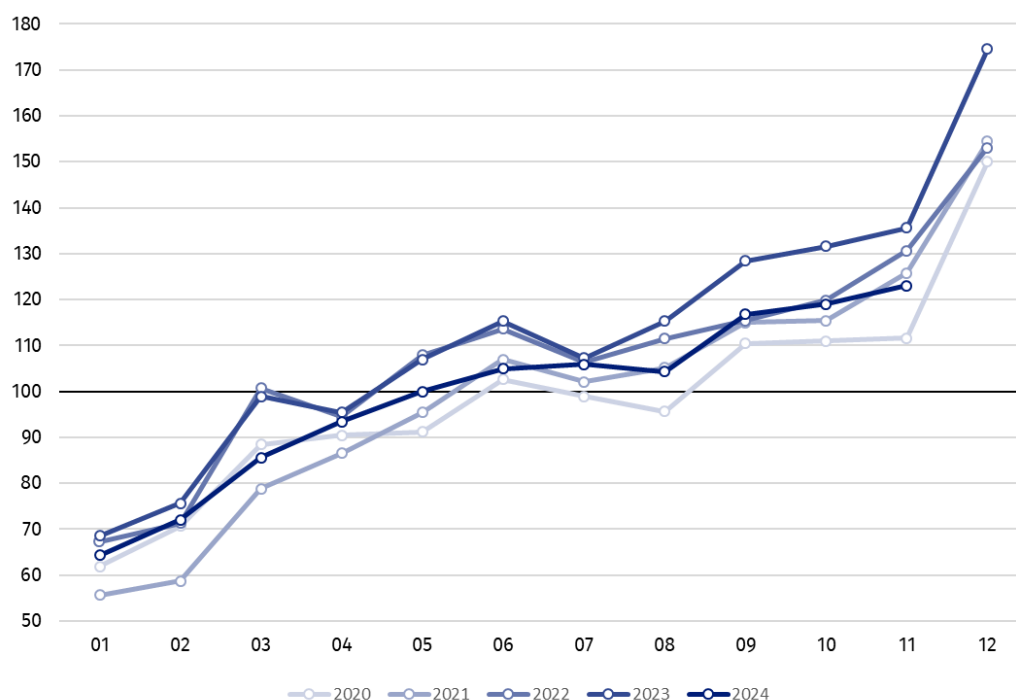
<sup>2</sup> Data including final information on production and prices in October and preliminary data in November.

whereas in entities performing specialised construction activities and in entities dealing mainly with construction of buildings decreases were recorded of 6.0% and 2.6% respectively.

A decrease in construction and assembly production in November 2024, compared with the same month of the previous year, was observed for investment works by 7.2% and for restoration works by 13.9% (in 2023, an increase of 21.6% and a decrease of 21.1% respectively).

In the period of January-November 2024, in relation to the corresponding period of 2023, there was a decrease in the investment works by 9.0% and a decrease in the restoration works by 3.6%. In the same period of 2023, was observed an increase of 28.0% and a decrease of 29.0%, respectively.

**Chart 1. Index numbers of construction and assembly production (constant prices; average monthly base 2021=100)<sup>3</sup>**



Index number of construction and assembly production in November 2024 (in constant prices), compared to the average monthly value of 2021, was 123.0.

In November 2024, after eliminating the seasonal factors, construction and assembly production reached the level by 5.8% lower than in the corresponding month of the previous year and higher by 2.7% in comparison to October 2024.

In case of quoting Statistics Poland data, please provide information: "Source of data: Statistics Poland" and in case of publishing calculations made on data published by Statistics Poland, please include the following disclaimer: "Own study based on figures from Statistics Poland".

<sup>3</sup> Preliminary data for November 2024.

Prepared by:  
**Statistical Office in Lublin**

**Director Krzysztof Markowski, Ph.D.**  
Phone: (+48) 695 255 301

Issued by:  
**Press Office**

Mobile: (+48) 695 255 032  
Phone: (+48 22) 608 38 04, (+48 22) 449 41 45,  
(+48 22) 608 30 09

e-mail: [obslugaprasowa@stat.gov.pl](mailto:obslugaprasowa@stat.gov.pl)



[stat.gov.pl/en/](https://stat.gov.pl/en/)



[@StatPoland](https://twitter.com/StatPoland)



[@GlownyUrzadStatystyczny](https://www.facebook.com/GlownyUrzadStatystyczny)



[gus\\_stat](https://www.instagram.com/gus_stat)



[glownyurzadstatystycznygus](https://www.youtube.com/glownyurzadstatystycznygus)



[glownyurzadstatystyczny](https://www.linkedin.com/company/glownyurzadstatystyczny)

#### **Related information**

[Statistical Bulletin](#)

[Socio-economic situation of the country](#)

#### **Data available in databases**

[Knowledge Database - Construction](#)

[Macroeconomic Data Bank](#)

[Macroeconomic indicators](#)

[Local Data Bank](#)

#### **Terms used in official statistics**

[Sale of construction and assembly production](#)

[Seasonally unadjusted index of sale of construction and assembly production in constant prices](#)

[Seasonally adjusted index of sale of construction and assembly production](#)

[Sale of construction works with an investment character](#)

[Sale of construction works with a restoration character and other works](#)