

# Index numbers of construction and assembly production in November 2025<sup>1</sup>

18.12.2025

 **0.1%**

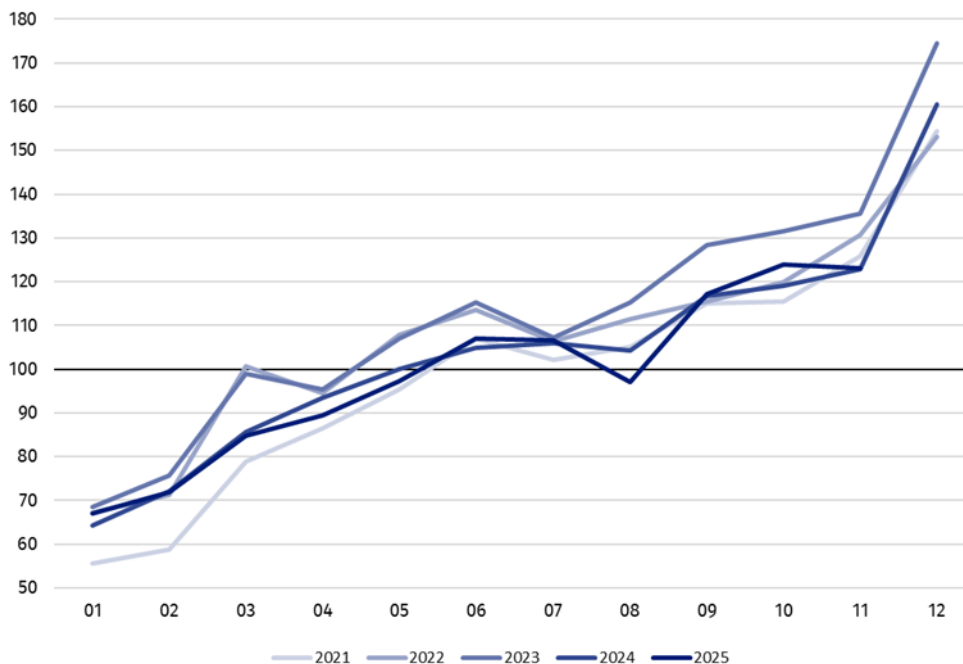
Increase of construction and assembly production compared to November 2024

According to preliminary data construction and assembly production (in constant prices) carried out domestically was in November 2025 higher by 0.1% than in the same period of 2024 and lower by 0.7% compared to October 2025.

In November 2025, after eliminating the seasonal factors, construction and assembly production reached the level by 1.0% lower than in the corresponding month of the previous year and lower by 0.9% in comparison to October 2025.

After seasonally adjusted, the decrease was noted in construction and assembly production of 1.0% an annual

**Chart 1. Index numbers of construction and assembly production (constant prices; average monthly base 2021=100)<sup>a</sup>**



<sup>a</sup> Preliminary data for November 2025.

The increase in construction and assembly production in November 2025 (in constant prices), compared to the average monthly value of 2021, was 23.1%.

<sup>1</sup> Preliminary data; comprise enterprises employing over 9 persons, whose the main type of activity is included in the section F "Construction" in accordance with the Polish Classification of Activities (PKD 2007).

**Table 1. Index numbers of construction and assembly production (constant prices)<sup>a</sup>**

Specification	11 2025		01–11 2025
	10 2025=100	11 2024=100	01–11 2024=100
<b>CONSTRUCTION</b>	<b>99.3</b>	<b>100.1</b>	<b>100.4</b>
Construction of buildings <sup>Δ</sup>	102.6	108.0	97.0
Civil engineering works <sup>Δ</sup>	94.6	87.2	97.4
Specialised construction activities	103.8	118.9	109.4

<sup>a</sup> Data including final information on production and prices in October and preliminary data in November 2025.

<sup>Δ</sup> Abbreviated form according to PKD 2007.

Construction and assembly production in November 2025 for entities performing specialised construction activities increased of 18.9% an annual, for entities dealing mainly with construction of buildings of 8.0%. The decrease was noted in entities whose basic type of activity was civil engineering of 12.8%.

In November 2025 compared to October 2025, a decrease in the sales of construction and assembly production was noted in entities dealing mainly with civil engineering works of 5.4%, whereas increases were in entities performing specialised construction activities of 3.8% and in whose basic type of activity was construction of buildings of 2.6%.

In the period of January–November 2025, in relation to the same period of the previous year, an increase in the sales of construction and assembly production was noted of 0.4%. The increase was observed in entities performing specialised construction activities of 9.4%, whereas decreases were noted in entities whose basic type of activity was construction of buildings of 3.0% and in entities dealing mainly with civil engineering works of 2.6%.

Analyzing the value of construction and assembly production in November 2025 in terms of construction works (investment and restoration works) were observed:

- an annual increase for restoration works by 7.8% and a decrease for investment works by 3.2% (in 2024, a decrease for restoration of 13.9% and a decrease for investment of 7.2%),
- compared to October 2025, a decrease for investment works by 3.9% and an increase by 6.5% for restoration works.

In the period of January–November 2025, in relation to the same period of the previous year, an increase in the sales of construction and assembly production were noted for investment works by 1.0% and a decrease for restoration works by 0.9% (in 2024, a decrease for investment works of 9.0% and for works restoration works of 3.6%).

In case of quoting Statistics Poland data, please provide information: “Source of data: Statistics Poland” and in case of publishing calculations made on data published by Statistics Poland, please include the following disclaimer: “Own study based on figures from Statistics Poland”.

In the period from of January–November 2025 the construction and assembly production increased by 0.4%

In November 2025 was noted an increase for restoration works of 7.8% an annual

Prepared by:

**Statistical Office in Lublin**

**Director Krzysztof Markowski, Ph.D.**

Phone: (+48) 695 255 301

Issued by:

**Press Office**

Mobile: (+48) 695 255 032

Phone: (+48 22) 608 38 04, (+48 22) 449 41 45,  
(+48 22) 608 30 09

e-mail: [obslugaprasowa@stat.gov.pl](mailto:obslugaprasowa@stat.gov.pl)



[stat.gov.pl/en/](https://stat.gov.pl/en/)



@StatPoland



@GlownyUrządStatystyczny



gus\_stat



glownyurządstatystycznygus



glownyurządstatystyczny

#### **Related information**

[Statistical Bulletin](#)

[Socio-economic situation of the country](#)

#### **Data available in databases**

[Knowledge Database - Construction](#)

[Macroeconomic Data Bank](#)

[Macroeconomic indicators](#)

[Local Data Bank](#)

#### **Terms used in official statistics**

[Sale of construction and assembly production](#)

[Seasonally unadjusted index of sale of construction and assembly production in constant prices](#)

[Seasonally adjusted index of sale of construction and assembly production](#)

[Sale of construction works with an investment character](#)

[Sale of construction works with a restoration character and other works](#)