

Registrations and bankruptcies of enterprises in the fourth quarter of 2025

10.02.2026

83 673

Number of registrations of enterprises (was higher than in the previous year)

In the fourth quarter of 2025, there were 83 673 registrations of enterprises recorded i.e. 2.0% registrations more than in the corresponding period of previous year and 102 enterprises declared bankruptcy i.e. 7 bankruptcies more than in the fourth quarter of 2024.

Registrations of enterprises

The number of registrations of enterprises in the fourth quarter of 2025 amounted to 83 673 compared to 82 029 in the same period of the previous year. More than a half of all registrations were in three kinds of activity: services (25.0%), construction (17.1%), and trade; repair of motor vehicles (12.8%). The largest increase in registrations compared to the fourth quarter of the previous year was recorded in services (by 10.6%) and industry (by 10.0%). The decrease was observed in the trade; repair of motor vehicles section (by 18.8%) and accommodation and catering (by 1.5%).

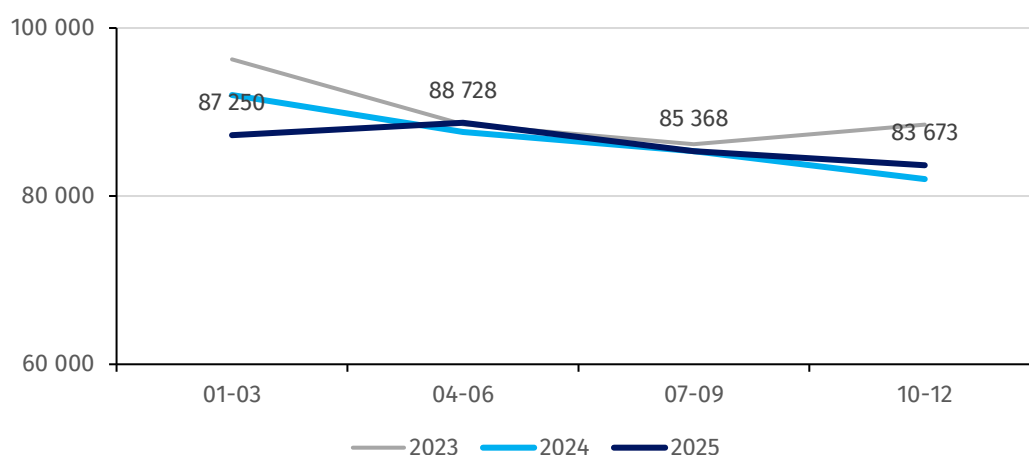
Considering the legal forms of entities, the majority of registrations concerned natural persons conducting economic activity, which accounted for 81.6% of all business registrations. The number of registrations in this group in the fourth quarter of 2025 increased by 2.0% year-on-year, following declines observed in the previous year. Limited liability companies accounted for 15.9% of all registrations, and compared to the fourth quarter of 2024, 1.6% more businesses were registered under this legal form. The number of cooperative registrations increased several times, i.e., 500 registrations compared to 31 in the fourth quarter of 2024, with 469 of them concerning special type of cooperatives, namely energy cooperatives, whose activities are focused solely on the production, storage, and trade of electricity or heat from renewable energy sources.

In whole 2025, there were 345 019 business registrations, which is 0.6% less than in 2024.

In the fourth quarter of 2025, 1/4 of registrations were recorded in services, where the largest increase in the number of registrations was noted (by 10.6%) compared to the same period of 2024

Over 93.0% of cooperative registrations concern energy cooperatives

Chart 1. Number of registrations of enterprises



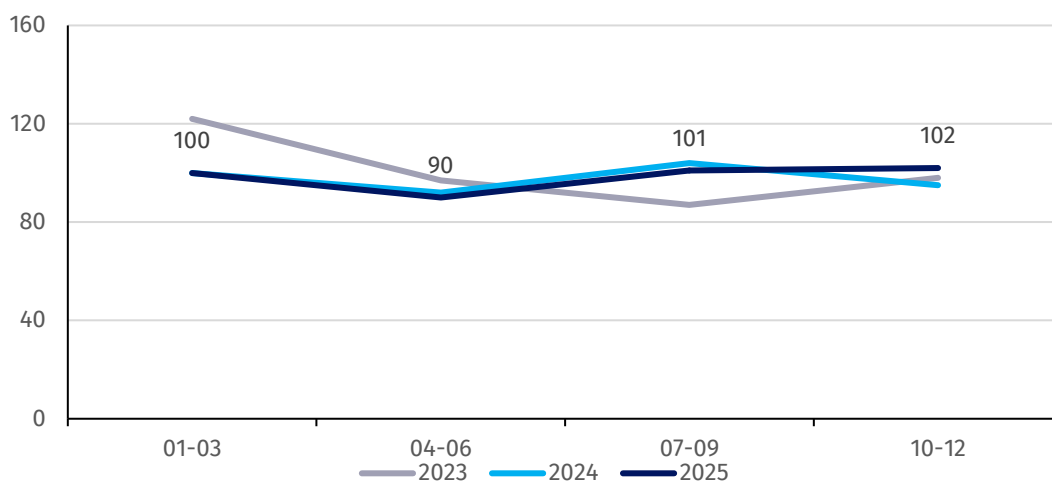
Bankruptcies of enterprises

In the fourth quarter of 2025, 102 business bankruptcies were recorded compared to 95 in the same period of 2024. An increase in the number of bankruptcies was observed in: construction (by 7 entities), services (by 7 entities), information and communication (by 4 entities), accommodation and catering (by 2 entities). In other types of activities was decrease of bankruptcies: in transport and warehousing (by 7 entities), industry (by 3 entities), and trade; repair of motor vehicles (by 3 entities).

Due to the distinguished legal forms, the largest increase in bankruptcies was recorded for the largest population of entities, i.e. limited liability companies (an increase of 4 entities in the fourth quarter of 2025 compared to an increase of 7 entities in the fourth quarter of 2024), as well as for public limited companies, general partnerships, and natural persons conducting economic activity. A decrease in the number of bankruptcies was noted for limited partnerships (by 3 entities) and cooperatives (by 1 entity).

In the fourth quarter of 2025, the number of bankruptcies amounted to 102, i.e., 7 more than in the same quarter of last year

Chart 2. Number of enterprises that declared bankruptcy



The data presented in this study are prepared in accordance with the guidelines of Eurostat and include information on registration and bankruptcy of enterprises (defined as a single legal unit) with a predominant kind of activity classified as, according to NACE Rev. 2, sections from B (mining and quarrying) to S (other service activities), excluding section O (public administration and defence; compulsory social security) and division 94 (activities of membership organisations).

By legal form, the data include the: civil partnerships operating based on a contract concluded in accordance with the Civil Code, natural persons conducting economic activity, professional partnerships, public limited companies, simple joint stock companies, limited liability companies, general partnerships, limited partnerships, public limited partnerships, co-operatives, branches of foreign enterprises, companies provided for in provisions other than the Commercial Companies Code and the Civil Code or legal forms to which the provisions on companies apply, foreign enterprises, state-owned enterprises, entities with no specific legal form.

In the study, there are additional forms of grouping introduced apart from the general classification:

- "industry" including sections of NACE Rev. 2: mining and quarrying (section B), manufacturing (section C), electricity, gas steam and air conditioning supply (section D), water supply; sewerage, waste management and remediation activities (section E);
- "services" including sections of NACE Rev. 2: financial and insurance activities (section K), real estate services (section L), professional, scientific and technical activities (section M), administrative and support service activities (section N);
- "other sections" including sections of NACE Rev. 2: education (section P), human health and social work activities (section Q), arts, entertainment and recreation (section R), other service activities (section S excluding division 94 activities of membership organisations).

The number of registrations in a given quarter applies to enterprises that were registered in the National Official Registry of Entities of the National Economy (REGON) in a given quarter. The registrations also include natural persons that terminated than restarted economic activity.

The number of bankruptcies in a given quarter applies to enterprises against which a decision on declaration of bankruptcy has been issued by a competent District Court in a given quarter (published in the National Debt Register).

In case of quoting Statistics Poland data, please provide information: "Source of data: Statistics Poland", and in case of publishing calculations made on data published by Statistics Poland, please include the following disclaimer: "Own study based on figures from Statistics Poland".

TABULAR ANNEX

Table 1. Number of registrations of enterprises by kind of activity

SPECIFICATION	2024				2025			
	Q1	Q2	Q3	Q4	Q1	Q2	Q3	Q4
TOTAL	92 031	87 642	85 341	82 029	87 250	88 728	85 368	83 673
Industry (sections B,C,D,E)	6 782	6 804	6 228	5 715	6 298	6 592	6 098	6 284
Construction (section F)	17 893	17 947	16 472	14 154	16 811	17 433	16 318	14 263
Trade; repair of motor vehicles (section G)	15 736	13 528	13 315	13 212	11 742	11 354	10 314	10 728
Transportation and storage (section H)	5 986	5 392	5 447	4 700	5 638	5 293	5 281	4 972
Accommodation and catering (section I)	2 940	3 737	2 959	2 420	2 847	3 641	2 830	2 384
Information and communication (section J)	8 069	7 023	7 031	6 752	6 998	6 823	6 868	6 866
Services (sections K,L,M,N)	20 527	19 329	18 952	18 928	21 874	22 066	21 493	20 932
Other sections (P,Q,R,S excluding division 94)	14 098	13 882	14 937	16 148	15 042	15 526	16 166	17 244

Table 2. Number of registrations of enterprises by legal form

SPECIFICATION	2024				2025			
	Q1	Q2	Q3	Q4	Q1	Q2	Q3	Q4
TOTAL	92 031	87 642	85 341	82 029	87 250	88 728	85 368	83 673
Civil law partnerships	1 208	949	1 033	1 225	1 069	885	887	832
Natural persons conducting economic activity	74 803	73 579	70 643	66 982	71 906	74 383	70 686	68 312
Professional partnerships	32	25	19	25	20	18	17	21
Public limited companies	32	36	19	29	33	24	32	25
Simple joint stock companies	231	183	205	217	186	191	267	298
Limited liability companies	15 133	12 388	12 990	13 068	13 476	12 735	12 915	13 276
General partnerships	237	181	177	168	234	185	190	173
Limited partnerships	236	201	173	215	203	161	188	175
Public limited partnerships	19	12	9	15	18	17	14	12
Cooperatives	16	15	16	31	38	67	123	500
Branches of foreign enterprises	46	51	48	46	48	46	34	44
Others, including without specific legal form ¹	38	22	9	8	19	16	15	5

¹Item includes: companies provided for in the provisions of acts other than the Code of Commercial Companies and the Civil Code or legal forms, to which regulations on companies apply, foreign companies, state-owned enterprises, without specific legal form.

Table 3. Number of bankruptcies of enterprises by kind of activity

SPECIFICATION	2024				2025			
	Q1	Q2	Q3	Q4	Q1	Q2	Q3	Q4
TOTAL	100	92	104	95	100	90	101	102
Industry (sections B,C,D,E)	23	20	26	33	34	26	28	30
Construction (section F)	18	13	17	9	9	19	10	16
Trade; repair of motor vehicles (section G)	19	26	19	26	22	19	29	23
Transportation and storage (section H)	6	4	8	11	12	9	10	4
Accommodation and catering (section I)	4	3	2	2	1	1	3	4
Information and communication (section J)	5	2	6	2	3	2	3	6
Services (sections K,L,M,N)	20	21	23	10	16	10	17	17
Other sections (P,Q,R,S excluding division 94)	5	3	3	2	3	4	1	2

Table 4. Number of bankruptcies of enterprises by legal form

SPECIFICATION	2024				2025			
	Q1	Q2	Q3	Q4	Q1	Q2	Q3	Q4
TOTAL	100	92	104	95	100	90	101	102
Natural persons conducting economic activity	5	4	6	3	6	11	11	6
Professional partnerships	0	0	0	0	0	0	0	0
Public limited companies	5	5	5	6	5	6	4	7
Simple joint stock companies	0	0	0	0	0	0	0	0
Limited liability companies	78	70	83	76	78	63	78	80
General partnerships	1	3	3	1	2	1	3	4
Limited partnerships	10	9	4	6	5	7	3	3
Public limited partnerships	1	1	1	0	1	0	0	0
Cooperatives	0	0	2	3	3	2	2	2
Branches of foreign enterprises	0	0	0	0	0	0	0	0
Others, including without specific legal form ¹	0	0	0	0	0	0	0	0

¹Item includes: companies provided for in the provisions of acts other than the Code of Commercial Companies and the Civil Code or legal forms, to which regulations on companies apply, foreign companies, state-owned enterprises, without specific legal form.

Prepared by:
Enterprises Department

Director Katarzyna Walkowska-Macias

Phone: (+48 22) 608 31 25

Issued by:
Press Office

Mobile: (+48) 695 255 032

Phone: (+48 22) 608 38 04, (+48 22) 449 41 45,
(+48 22) 608 30 09

e-mail: obslugaprasowa@stat.gov.pl



stat.gov.pl/en/



[@StatPoland](#)



[@GłównyUrządStatystyczny](#)



[gus_stat](#)



[głównyurządstatystycznygus](#)



[głównyurządstatystyczny](#)

Related information

[News releases. Registrations and bankruptcies of enterprises](#)