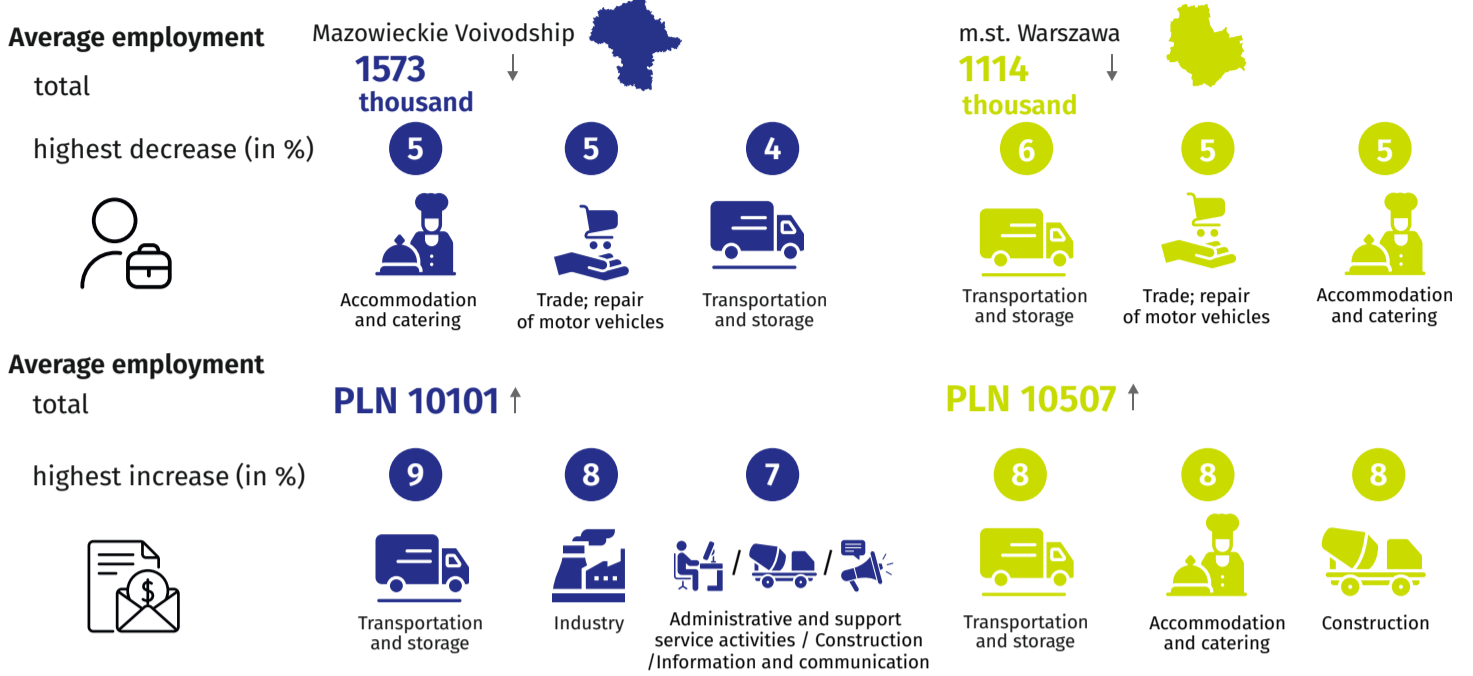




Labour market in August in 2025

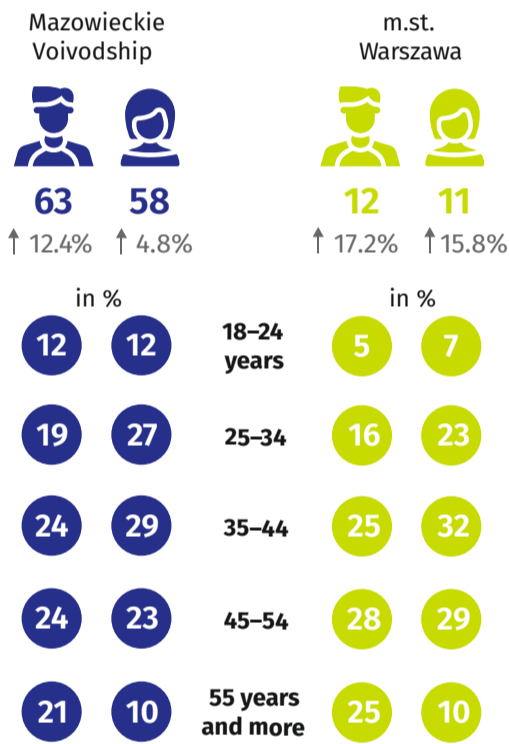
Data on Mazowieckie Voivodship
and m.st. Warszawa

Average employment and monthly gross wages and salaries in the enterprise sector *



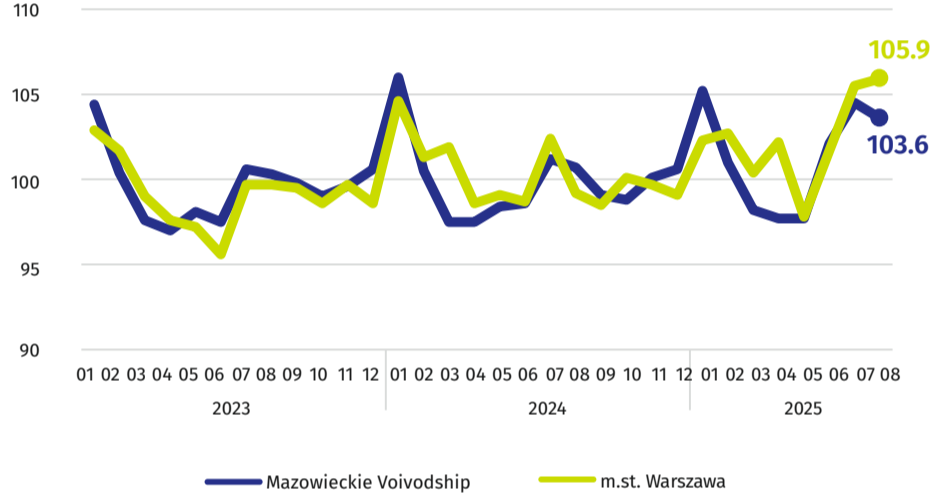
Registered unemployed persons at the end of month

by sex and age (in thousands)



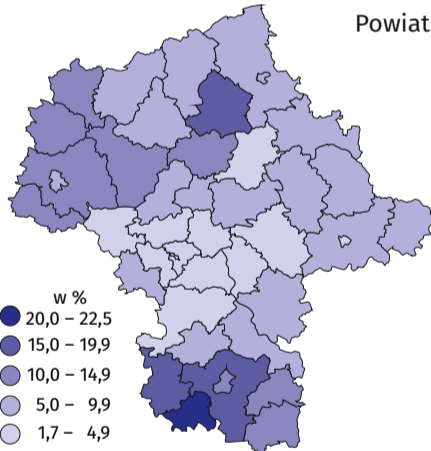
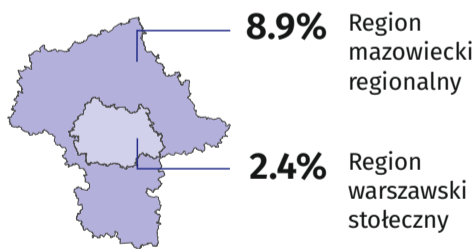
Indices of the number of the registered unemployed at the end of month

(previous month=100)



Registered unemployment rate

Registered unemployment rate in regions of Mazowieckie Voivodship



Powiaty with the highest decreases in unemployment rate in pp

- wyszkowski ↑ 1.2
- radomski ↑ 1.0
- wołomiński ↑ 1.0
- żuromiński ↑ 0.9

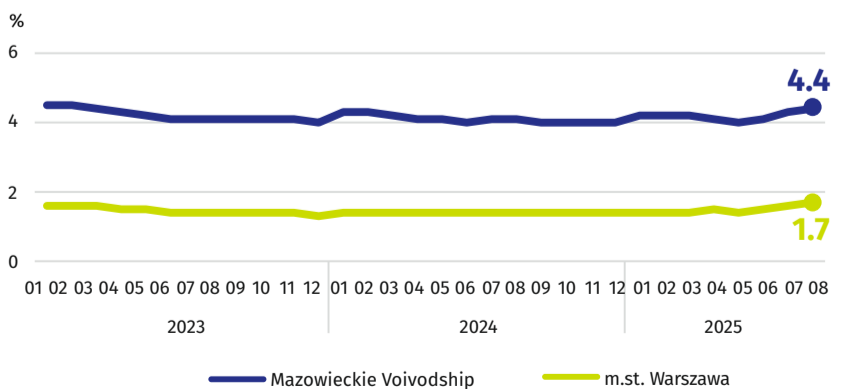
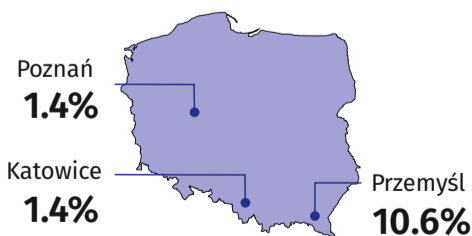
Powiaty with the highest unemployment rate in %

- szymbarkowski ↓ 1.0
- przysuski ↓ 0.1
- radomski ↑ 1.0

Powiaty with the lowest unemployment rate in %

- m.st. Warszawa **1.7** ↑ 0.3
- warszawski zachodni **1.9** ↑ 0.2
- pruskowski **2.5** ↑ 0.3

Cities with powiat status with the lowest and highest unemployment rate in Poland



↑ ↓ increase/decrease/no changes compared to August 2024

* In enterprises employing more than 9 persons.

When publishing Statistical Office data - please indicate the source.

Rate
the study