

# Statistics of Warszawa No. 2/2026

26 March 2026

In February 2026, there was a decrease in the average employment and an increase in the number of unemployed persons compared to the corresponding period of previous year. Sold production of industry was higher than a year ago, while construction and assembly production was lower. Compared to February of the previous year, there was an increase in both retail and wholesale sales. February 2026 was characterised by a significantly lower number of dwellings completed than a year earlier.

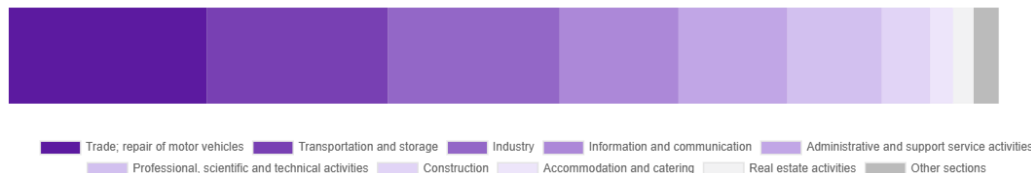
## Average paid employment

Average paid employment in the enterprise sector in February 2026 amounted to 1114.2 thousand persons (converted into full-time equivalents) and was by 3.5 thousand persons, i.e. by 0.3% smaller than in January 2026, and by 4.3 thousand persons, i.e. by 0.4% smaller than in February 2025.

Compared to January 2026, the decrease in the average employment was recorded in the following sections: administrative and support service activities (by 2.2%), professional, scientific and technical activities (by 0.8%), real estate activities, transportation and storage as well as accommodation and catering (by 0.4% each), construction and trade; repair of motor vehicles (by 0.3% each), information and communication (by 0.1%).

Whereas an increase in the average employment was recorded in the section of industry (by 1.3%).

**Chart 1. Structure of average paid employment by sections of PKD in February 2026**



Compared to February 2025, a decrease in average employment was recorded in the sections: transportation and storage (by 3.5%), accommodation and catering (by 2.6%), real estate activities (by 2.3%), trade; repair of motor vehicles (by 1.4%), information and communication (by 0.1%).

An increase in average employment occurred in the sections: professional, scientific and technical activities (by 2.5%), administrative and support service activities (by 2.1%), construction (by 2.0%), industry (by 0.5%).

## Registered unemployment\*

At the end of February 2026, the number of registered unemployed persons amounted to 20599 and was by 517 persons, i.e. by 2.6% larger than at the end of January 2026 and by 940 persons, i.e. by 4.8% larger than in the corresponding period of 2025.

The number of registered unemployed women amounted to 9798, which accounted for 47.6% of the total unemployed (as a month before and 47.2% a year before) and 16.8% of unemployed women in Mazowieckie Voivodship. As compared to January 2026, the number of unemployed women increased by 236 persons, i.e. by 2.5% and compared to February 2025 increased by 527 persons, i.e. by 5.7%.

The registered unemployment rate amounted to 1.5% (as in the previous month and 1.4% in the previous year), in Mazowieckie Voivodship it was 4.5% (as a month before and 4.2% a year before), while in the country at a level of 6.1% (6.0% a month before and 5.5% a year before).

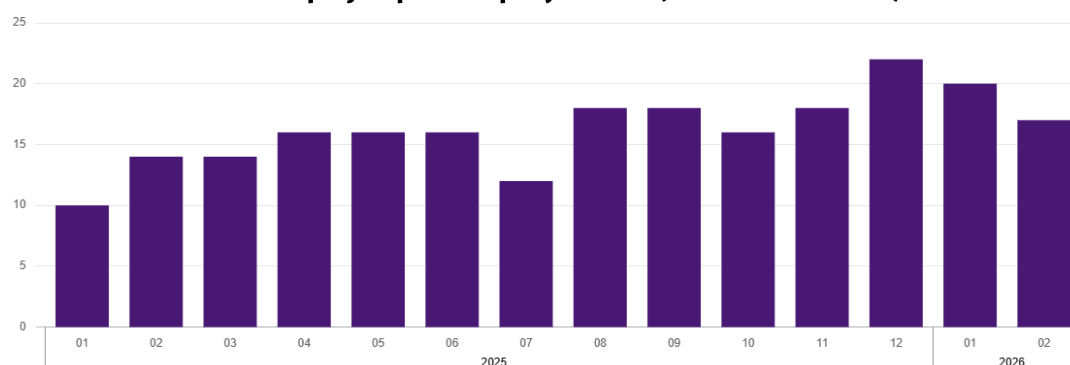
In February 2026, there were 3027 unemployed persons registered in labour offices (3040 in January 2026, and 2634 in February 2025). Registered unemployed persons accounted for 23.5% of the total registered unemployed in the Voivodship.

The number of persons registering for the first time amounted to 1189 (1141 a month before), which accounted for 39.3% of the total unemployed who registered in February 2026 and 31.7% of persons registering for the first time in the Voivodship. The share of persons terminated due to company reasons among unemployed persons registered in February 2026 amounted to 2.9% (in Mazowieckie Voivodship 4.0%), 4.0% a month before and 3.0% a year before.

In February 2026, 2510 persons were removed from unemployment rolls (2912 in January 2026, and 2114 in February 2025), which accounted for 23.7% of unemployed persons removed from unemployment rolls in Mazowieckie Voivodship. Out of the unemployed removed from unemployment rolls, 1267 persons took up work. Moreover, 1019 persons lost their status of the unemployed as a result of not maintaining contact with the labour office at least once every 90 days. The reason for removing from the register was also starting training or traineeship, acquisition of retirement or pension rights, and others.

There were 18024 persons who were not entitled to the unemployment benefit, i.e. 87.5% of the total unemployed (16978 persons a year before, i.e. 86.4%), whereas 2575 unemployed persons were entitled to the unemployment benefit.

**Chart 2. Number of unemployed persons per job offer (as of end of month)**



\* On 1 June 2025, the new Act on the Labour Market and Employment Services (Journal of Laws of 2025, item 620) entered into force, introducing changes to the rules for registering and recording unemployed persons. As a result, some published data has been adjusted to reflect the current legal status and statutory terminology, which may affect the comparability of current data with previous periods.

In February 2026, there were 1533 job offers submitted to labour offices, which accounted for 38.1% of job offers in Mazowieckie Voivodship and at the end this month the labour offices had job offers for 1201 persons. At the end of February 2026, there were 17 persons per one job offer (20 in the previous month, and 14 in the previous year), while in Mazowieckie Voivodship, there were 36 persons (39 a month before, and 17 a year before) registered as unemployed.

### Wages and salaries

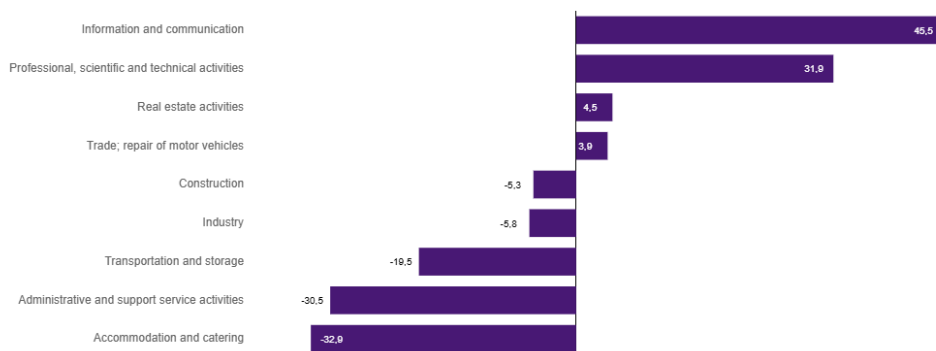
The average monthly gross wages and salaries in the enterprise sector in February 2026 amounted to PLN 11201.20 and were by 3.3% higher as compared to the previous month and by 6.6% higher than in the corresponding period of 2025.

Compared to January 2026, an increase in the average gross wages and salaries was recorded in the following sections: trade; repair of motor vehicles (by 7.9%), information and communication (by 6.5%), construction (by 5.3%), real estate activities (by 5.0%), professional, scientific and technical activities (by 3.9%), administrative and support service activities (by 1.7%), industry (by 0.8%).

Whereas a decrease in the average wages and salaries was recorded in the section of accommodation and catering (by 7.7%) and transportation and storage (by 1.3%).

Compared to February 2025, an increase in the average gross wages and salaries was recorded in the sections: real estate activities (by 10.8%), information and communication (by 10.0%), professional, scientific and technical activities (by 7.5%), industry (by 7.4%), construction (by 6.7%), transportation and storage (by 6.5%), accommodation and catering (by 4.8%), trade; repair of motor vehicles (by 4.4%), administrative and support service activities (by 0.9%).

**Chart 3. Relative deviations (in %) of monthly gross wages and salaries in selected sections from average wages and salaries in enterprise sector in Warszawa in February 2026**



### Construction

Sold production of construction in February 2026 amounted (at current prices) to PLN 4588.4 million and compared to January 2026 was larger by 12.1% and compared to the corresponding period of previous year it decreased by 6.8%.

In January-February 2026, sold production of construction reached the value of PLN 8934.5 million, i.e. by 10.9% smaller than in the corresponding period of 2025.

Construction and assembly production in February 2026 amounted to PLN 936.9 million (at current prices) and accounted for 20.4% of sold production of construction. Compared to the previous year, construction and assembly production decreased by 2.7%, and compared to February 2025 it was smaller by 5.7%.

In January-February 2026, construction and assembly production amounted to PLN 1924.2 million and accounted for 21.5% of sold production of construction (20.0% a year before). Compared to the corresponding period of previous year, construction and assembly production was smaller by 4.1%.

The decrease in production in relation to the corresponding period of 2025 occurred in units dealing with civil engineering (by 6.6%), construction of buildings (by 3.1%) and specialised construction activities (by 1.1%).

Labour productivity measured by production per employed person in construction in February 2026 amounted to PLN 84.6 thousand and was by 12.5% higher than a month before and by 8.6% lower than in February 2025.

### Trade

Retail sales in trade and non-trade enterprises in February 2026 (at current prices) were by 7.6% smaller than in January 2026 and by 2.8% higher compared to February 2025.

Compared to January 2026, the largest decrease was recorded in sales of textiles, clothing and footwear (by 19.3%), and in sales of newspapers, books, other retail sales in specialised stores (by 16.4%), followed by sales of food, beverages and tobacco (by 10.9%), sales in the "others" group (by 9.7%), sales of furniture, electronic goods and household equipment (by 9.6%), and other retail sales in non-specialised stores (by 6.8%).

However, there was an increase in sales of solid, liquid and gas fuels (by 7.2%), sales of motor vehicles, motorcycles, parts (by 3.8%), and sales of pharmaceuticals, cosmetics, orthopaedic equipment (by 0.4%).

Compared to February 2025, the largest decrease was recorded in retail sales in non-specialised stores (by 39.9%), followed by sales in the "others" group (by 8.4%), sales of textiles, clothing and footwear (by 4.7%), sales of motor vehicles, motorcycles, parts (by 3.9%), sales of solid, liquid and gas fuels as well as sales of pharmaceutical, cosmetics, orthopaedic equipment (by 1.4% and 1.3%, respectively).

However, there was a decrease in sales of furniture, electronic goods and household equipment (by 4.3%), sales of newspapers, books, other retail sales in specialised stores (by 3.8%), and sales of food, beverages and tobacco (by 3.5%).

In January-February 2026, retail sales increased by 3.8% compared to the corresponding period of 2025.

Wholesale in trade enterprises in February 2026 (at current prices) was by 11.0% larger as compared to the previous month and by 13.4% higher than in February 2025, and in wholesale enterprises it was higher by 8.0% and higher by 20.0%, respectively.

In January-February 2026, retail units achieved wholesale that was 6.5% higher than a year ago, while wholesale enterprises achieved wholesale that was 13.1% higher.

## **Industry**

The sold production of industry in February 2026 amounted to (in current prices) PLN 15861.0 million and was (at constant prices) larger than in the corresponding month of 2025 by 6.5%. As compared to February 2025, an increase in sold production of industry was recorded in manufacturing by 5.2%.

In the period January-February 2026, sold production of industry amounted to PLN 31868.9 million (at current prices) and was (at constant prices) higher by 6.4% than that achieved in the same period of 2025. In manufacturing, an increase in production by 4.9% was recorded.

Among the divisions classified as manufacturing, the increase in sales was recorded, among others, in: manufacture of textiles (by 64.6%), repair and installation of machinery and equipment (by 55.7%), other manufacturing (by 48.5%), manufacture of beverages (by 34.1%), manufacture of computer, electronic and optical products (by 33.5%), manufacture of furniture (by 30.3%), manufacture of machinery and equipment n.e.c. (by 26.4%), manufacture of food products (by 8.5%), manufacture of motor vehicles, trailers and semi-trailers (by 4.6%), manufacture of basic metals (by 4.4%), manufacture of rubber and plastic products (by 1.4%).

The decrease in sales was recorded, among others, in: manufacture of other non-metallic mineral products (by 28.6%), manufacture of electrical equipment (by 18.5%), manufacture of products of wood, cork, straw and wicker (by 17.1%), manufacture of wearing apparel (by 9.1%), manufacture of coke and refined petroleum products (by 7.8%), manufacture of paper and paper products (by 6.5%), printing and reproduction of recorded media (by 5.0%), manufacture of pharmaceutical products (by 3.2%), manufacture of metal products (by 3.1%), manufacture of chemicals and chemical products (by 2.9%).

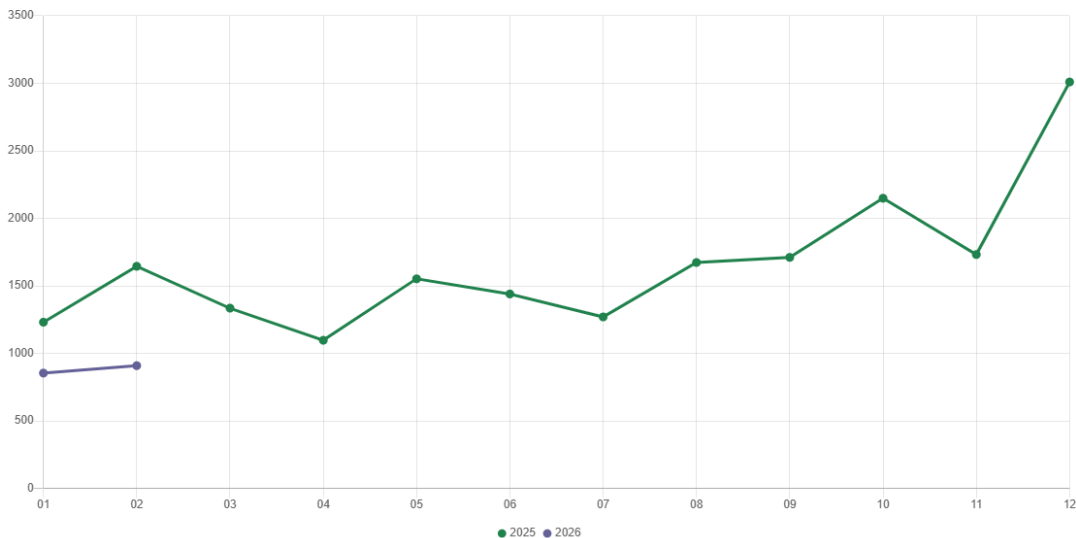
Labour productivity in industry measured by production per employed person, in January-February 2026 amounted to PLN 165.1 thousand (at current prices) and was – at constant prices – by 5.8% higher than in the previous year.

## **Residential construction**

According to preliminary data, 909 dwellings were completed in Warszawa in February 2026, i.e. by 44.7% less than in the previous year.

In the period January-February 2026, 1763 dwellings were completed (by 38.7% less than in the corresponding period of 2025), and 5939 dwellings in Mazowieckie Voivodship, i.e. 13.7% less than in January-February 2025. The decrease in the number of dwellings completed was recorded in construction for sale or rent from 2754 to 1665, i.e. by 39.5% less.

**Chart 4. Dwellings completed**



In January-February 2026, construction begun in 2052 dwellings (by 26.2% less than in the corresponding period of 2025) of which: 2013 in construction for sale or rent, 39 in private construction.

In January-February 2026, the number of dwellings for which permits have been granted or which have been registered with a construction project amounted to 2123 (by 4.0% less than in the corresponding period of 2025), of which 62 dwellings in buildings built by private investors.

The average useful floor area of a dwelling completed in January-February 2026, amounted to 68.6 m<sup>2</sup> and increased by 10.1 m<sup>2</sup>. In private construction, the average useful floor area of dwellings amounted to 182.2 m<sup>2</sup> (by 34.5 m<sup>2</sup> less than in the corresponding period of 2025), in construction for sale or rent – 61.9 m<sup>2</sup> (by 8.8 m<sup>2</sup> more).

### Entities of the national economy

At the end of February 2026, there were 602067 entities of the national economy registered in the REGON register in Warszawa, which accounted for 55.0% of the total in Mazowieckie Voivodship. Compared with January 2026, the number of entities of the national economy increased by 2030 (i.e. by 0.3%), and compared to February 2025 increased by 21364 (i.e. by 3.7%).

As of the end of February this year, there were 271566 legal persons and organisational units without legal personality registered in the REGON register, of which 196900 commercial companies. The number of these entities increased by 0.3% each compared to the previous month, and on an annual basis by 3.5% and 4.2%, respectively.

The number of registered natural persons conducting economic activity as of the end of February 2026 amounted to 330501 and compared to January 2026 it was higher by 0.4%, and compared to the corresponding period of the previous year increased by 3.8%.

In Warszawa, in February 2026, the most numerous were entities dealing with: professional, scientific and technical activities (19.4% of total registered units), trade; repair of motor vehicles (15.7%), as well as information and communication (13.0%).

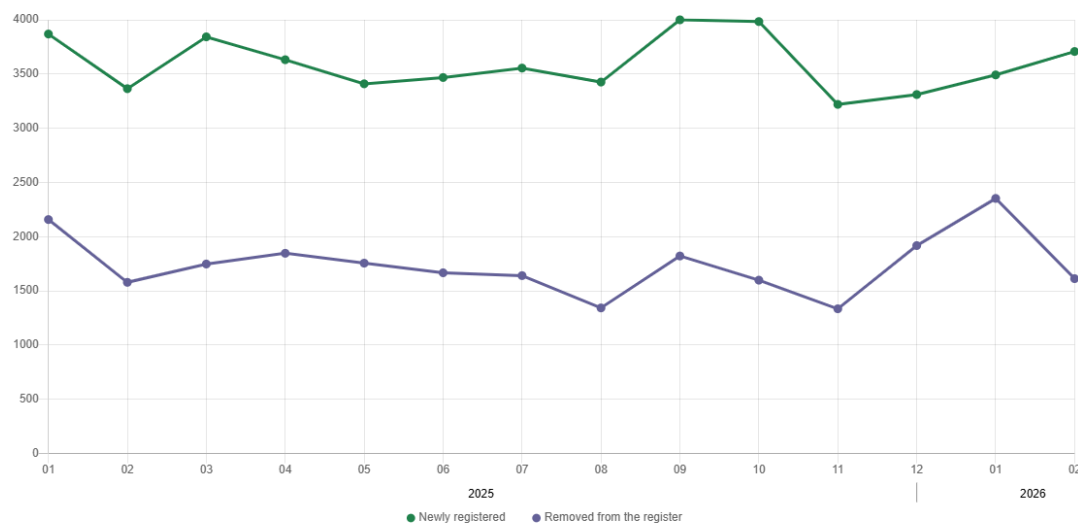
Compared to January 2026, the number of entities increased, among others, in the sections: administrative and support service activities (by 1.1%), public administration and defence; compulsory social security (by 1.0%), human health and social work activities (by 0.7%), mining and quarrying, education and construction (by 0.5% each), accommodation and catering as well as information and communication (by 0.4% each). However there was a decrease in the number of entities in the sections: art, entertainment and recreation (by 1.5%), water supply; sewerage, waste management and remediation activities and agriculture, forestry and fishing (by 0.5% each).

Compared to February 2025, the largest increase in the number of entities was recorded, among others, in the sections: administrative and support service activities (by 9.5%), electricity, gas, steam and air conditioning supply (by 7.3%), human health and social work activities (by 6.6%), education (by 6.1%), construction (by 5.5%). Whereas a decrease was noted in the

sections: water supply; sewerage, waste management and remediation activities (by 1.1%), agriculture, forestry and fishing (by 1.0%) and trade; repair of motor vehicles (by 0.6%).

In February 2026, 3708 new entities were entered into the REGON register, i.e. by 6.2% more than in the previous month. The newly registered entities were dominated by natural persons conducting economic activity – 2409 (by 10.1% more than in January 2026). The number of newly registered commercial companies was smaller compared to the previous month by 1.2%, including limited liability companies smaller by 2.2%.

**Chart 5. Entities newly registered and removed from the register**



In February 2026, 1613 entities were removed from the REGON register (compared to 2353 in the previous month), including 1032 natural persons conducting economic activity (by 38.9% less).

As of the end of February 2026, 74534 entities had suspended activity in the REGON register (by 0.9% more than a month before). The vast majority were natural persons conducting economic activity (90.8%).

When quoting Statistics Poland data, please provide the information: “Source of data: Statistics Poland”, and when publishing calculations made on data published by Statistics Poland, please include the following disclaimer: “Own study based on figures from Statistics Poland”.

Prepared by:  
**Statistical Office in Warszawa**  
**Director Agnieszka Ajdyn**  
Phone: (+48 22) 464 23 15

Issued by:  
**Mazovian Centre for Regional Surveys**  
**Information Centre**  
Mobile: (+48) 783 940 141

**Press office in the Statistical Office**  
Mobile: (+48) 783 940 141  
**e-mail: [m.kaluski@stat.gov.pl](mailto:m.kaluski@stat.gov.pl)**

-  [warszawa.stat.gov.pl/en/](http://warszawa.stat.gov.pl/en/)
-  [@Warszawa\\_STAT](https://twitter.com/Warszawa_STAT)
-  [@UrzadStatystycznywWarszawie](https://www.facebook.com/@UrzadStatystycznywWarszawie)
-  [gus\\_stat](https://www.instagram.com/gus_stat)
-  [glownyurządstatystycznygus](https://www.youtube.com/glownyurządstatystycznygus)
-  [glownyurządstatystyczny](https://www.linkedin.com/company/glownyurządstatystyczny)

#### Related information

[Communications and Announcements](#)

#### Data available in databases

[Local Data Bank → Labour market](#)

#### Terms used in official statistics

[Registered unemployed persons](#)

[Registered unemployment rate](#)

[Average paid employment](#)

[Average monthly gross wages and salaries](#)

[Dwellings completed](#)

**Evaluate**  
the study

